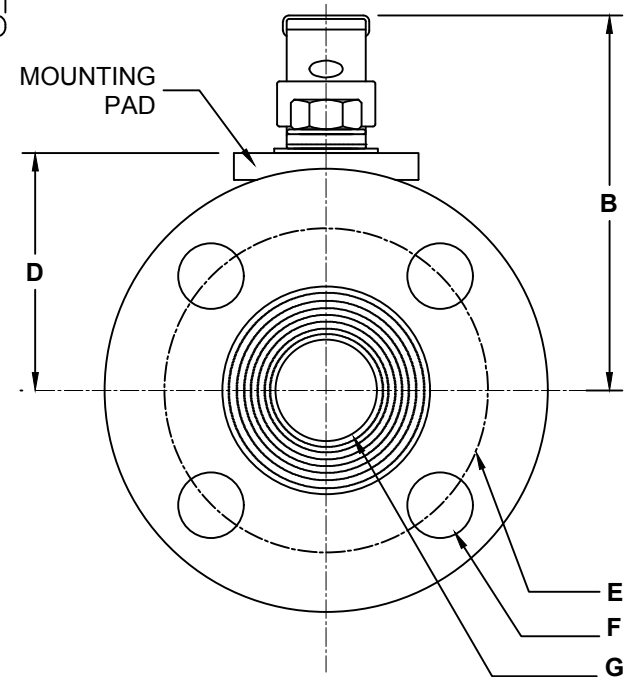
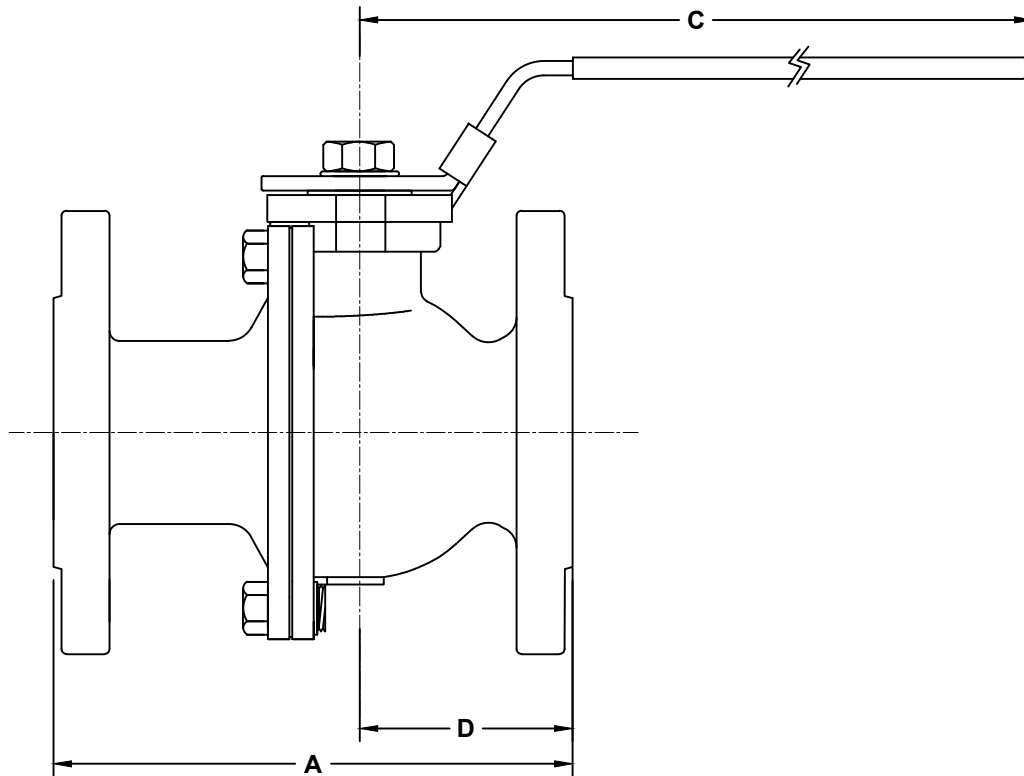
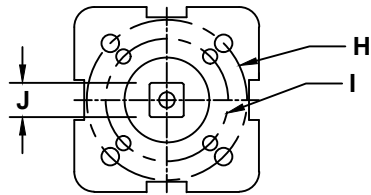


ISO MOUNTING PAD (HANDLE NOT SHOWN)



C2FF-S2FF150-DM DIMENSIONS

PART	A	B	C	D	EØ	F	G	H	I	J	Cv	BREAK TORQUE	SIZE
*2FF150DM-8	5.00	3.66	6.30	2.29	3.12	0.63x4	0.98	F05	NA	0.35	50	89 in/lbs	1"
*2FF150DM-12	6.50	4.65	9.45	3.15	3.88	0.63x4	1.50	F07	F05	0.43	267	195 in/lbs	1 1/2"
*2FF150DM-16	7.01	5.00	9.45	3.53	4.75	0.62x4	1.97	F07	F05	0.43	308	372 in/lbs	2"
*2FF150DM-24	7.99	6.38	12.60	4.72	6.00	0.75x4	3.00	F10	F07	0.55	1015	796 in/lbs	3"
*2FF150DM-32	9.02	6.97	14.96	5.29	7.50	0.75x8	4.00	F10	F07	0.67	1616	841 in/lbs	4"

NOTES:

- FULL PORT- ALL SIZES
- ISO MOUNTING PAD
- LOCKING HANDLE
- BLOWOUT PROOF STEM
- GROUNDED BALL & STEM
- DESIGN: ANSI B16.5, B16.10, B16.34
- COMPLIES TO:
NACE MR 0175/ISO 15156 & NACE MR 0103
- FIRE SAFE CERT: API607, 6TH EDITION

STAINLESS STEEL OR CARBON STEEL
 *2FF: S2FF = STAINLESS STEEL
 C2FF= CARBON STEEL



DRAWING NAME:
2-WAY STAINLESS STEEL OR CARBON STEEL
CLASS 150 FLANGE VALVES WITH ISO MOUNTING PAD

MATERIAL:	A	DRAWING NUMBER: S2FF150DM-C2FF150DM-SERIES	REV. 1
SCALE: N.T.S.	NAME: MCH	DATE: 3-2-17	

THIS DOCUMENT IS PROPERTY OF UNIVERSAL COMPONENTS, INC.
 ANY REPRODUCTION, DISCLOSURE, OR USE OF THIS DOCUMENT IS
 EXPRESSLY PROHIBITED UNLESS OTHERWISE AGREED UPON IN WRITING.
 ALL SPECIFICATIONS SUBJECT TO CHANGE WITHOUT NOTICE.